

Mountain Empire Beekeepers Association

Minutes

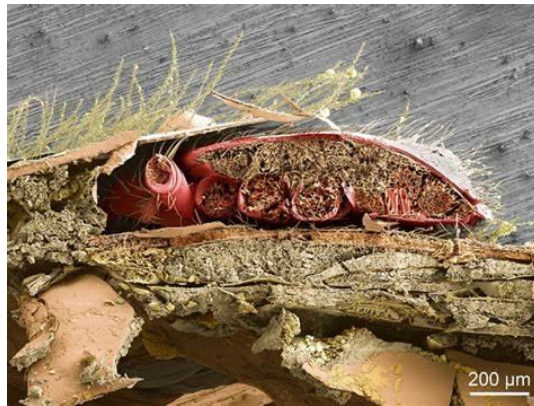
June 24, 2021

The meeting was called to order at 6:30 p.m. by Mickey Cunningham at the Pioneer Church located at 615 Max Meadows Rd. Max Meadows, Va 24360. 19 members were present.

Minutes and Treasurer's Report: Motion to approve minutes—Mickey Cunningham, seconded by Cathy Hounshell. Minutes approved. The treasurers report was given by Gary Tolley. The report was filed for audit.

Speaker: Cathy Hounshell

Presentation: Video and Discussion – Varroa Mite on Fat Body



Varroa Mites Feed on the Fat Bodies of Honey Bees, Not the Hemolymph.

- The PDF attached is a picture of brood cells on a foundation frame with crystallization of varroa mite feces. If you see this, go ahead and treat. Some of the crystallized mite poop has been circled with a red marker. When you look at your cells and there are no yellow crystals, you should check your brood at least every 2 to 3 weeks.
- Some have noticed that just before the golden rod blooms there seems to be a peek in varroa mites. Your mite counts should be 2 per 100 or less.

Video and Discussion - [Extended Release Queen Cage](#)

Video and Discussion - [Purdue Ankle Biter Worker Bee Attaching A Varroa Mite](#)

Old Business:

- The Annual Grayson County Expo and Fair will be held August 13th and 14th at the Bottomley Christmas Tree Farm. There will be a honey exhibit and tasting. We encourage everyone to participate in the honey show. Mickey has offered to help get your honey properly bottled and labeled with your name on it for the show.
- Tim Service has laying queens available now. There may be a waiting list. His contact information is: canoemaker@centurylink.net 276-952-5077
- Mickey Cunningham encourages all beekeepers with 3 or more years of experience to help mentor others.
- Patty Younger has offered her church, Pioneer church in Max Meadows, as a possible meeting place for MEBA. Members will be notified with the address before the next meeting should this occur. (Thank you Patty!)

- All MEBA members that paid due for the year 2020 will not have to pay dues for 2021 since we only met two times during 2020.

New Business:

- The July issue of American Bee Journal has a good article on page 775 written by Alison McAfee called **The Legacy of the V-Mite Biting Bees**. She also wrote **The Reality of Ancestry: Italians vs Carniolans**.
- The Eastern Apicultural Society (EAS) Convention will be at Shepherdsville Kentucky August 11-13, 2021. This is the same week as the Grayson County Agricultural Fair. The convention is \$300.00 per person for the 3-day event. They will be having around 7 speakers.
- Information about the Grayson County Agricultural Fair can be found at <https://www.graysoncountyvaagfair.com/> The Grayson County Fair is August 13-14. Rules for the honey show are attached. Friday August 13 from 5:00 p.m. -7:00 p.m. will be a honey tasting. There are plans in the works to have an exhibit at the entrance to include painted hives, tools, people talking, pictures, etc...
- Cathy Hounshell will be purchasing nut milk bags (Nylon bags) for filtering honey for the honey show for MEBA participants. These are to be returned after the show so that they can be used for future honey shows by members.
- The Abingdon Beekeepers Association will be having a honey show after the Grayson County Agricultural Honey Show.
- Herman Hearn is in need of downsizing his hives. He has nucs for sell. He can be reached at hermanandtheresa@gmail.com or gtchearn@aol.com
- Blue Ridge Bee Supply in Mt. Airy will melt and strain your bees wax. You need to wash it first. There is a charge per pound.

Hive Report: What Should You Be Doing with Your Hives?

Check for Mites & treat when necessary

Replace bad queens

Check your batteries for your electric fence

Look out for Small Hive Beetles –SHB

Add supers

Bees in The News:

No Bees in the news.

Raffle Winners:

- Vicky Linkous – Frame spacer
- Ron Honaker – Deep frames
- Patty Younger-Frame Spacer
- Herman Hearn-Plastic honey bears
- Jeff Sexton-Hive tool
- Johnathan Wright-Medium woodenware super
- Joe Turpin-Hive Tool
- Theresa Hearn-Hive tool
- Ron Honaker –Soap
- Patty Younger-Bee happy spatula
- Vicky Linkous-Wax scratcher
- Ron Honaker-Lip balm, front entrance bee feeder, cup huggy

Next Meeting: July 22, 2021 6:30 p.m._Pioneer Church located at 615 Max Meadows Road Max Meadows, Va 24360.

Adjourned at 8:00 p.m.

Respectfully submitted,

Connie Armentrout, MEBA Secretary

Grayson County Fair
August 13 and 14, 2021
Bottomley's Evergreens and Farm
Route 21
Elk Creek, VA 24326

Reference: Honey Show on August 14, 2021

Submit exhibits in person between 8:30-9:45 A.M., or contact
Mickey Cunningham, tel. 276-579-2123 to arrange special handling

2021 Grayson County Fair: Honey Show Rules

Purpose:

- To let public know about honey producers in the local area
- To improve quality of honey produced locally
- To introduce competitiveness forum to and for beekeepers

Responsibilities:

The Grayson County Fair Committee (GCFC) will be responsible for drafting policies, rules, and judging criteria and for disseminating information. Judges will adhere to the Committee's policies and rules herein. The Committee will be responsible for:

- Allocating space for the show and arranging entries.
- Compliance with show rules and judging criteria.
- Obtaining qualified judges.
- Obtaining funds for judges and awards.
- Accepting entries and opening show at predetermined, published time.
- Making recommendations for future shows within one month following the Fair.
- Recording all "Blue Ribbon" winners for local newspapers.

Criteria:

The Honey Show judging criteria will reflect the skill of participant. Color and flavor of local honey will be important. Alteration of color or flavor will be reason for disqualification.

The Honey Show judges may be professors of apiculture, or students of apiculture under a professor's supervision, blue-ribbon winners of regional or state honey shows. Judges must completely fill out all score cards. Should an entry be disqualified, the judge(s) must state the reason for disqualification. Judges will break all ties, and decisions of judges is final. Exhibitors will receive score cards after end of competition.

Disclaimer: GCFC and judges will NOT be liable for damage to product; however, due care will be taken during display and judging. Exhibitors enter items at their own risk. Time permitting, judges may hold an open discussion open to the public after the show.

General Rules of Honey Show:

- All entries MUST BE produced and bottled after January 31, 2021.
- One entry for each class of honey may be made by an individual, family, or apiary.
- Rules for each class will apply.
- Identifying labels will be forbidden. Entries will receive a number by exhibit committee.
- Exhibitor must choose which classes to place entries according to **UC Davis Honey Color Codes**. Judges may adjust classes at their discretion.
- Entries can be made only between 8:30 -9:45 A.M., August 14, 2021.
- Entries must be left intact and on display until released by GCFC Chair.
- Displays of commercial products or displays will NOT be permitted in the Honey Show area.
- Judge's decision(s) will be final.
- Show Chair or Master Judge has authority to accept, reject, and classify entries IAW show policies, rules, and judging criteria.

- GCFC assumes no liability for loss or damage to entries.
- Entries not claimed by the end of the Fair will be disposed of by the Show Chair.

Honey Show-Class Description

H1- 2 jars of honey 1 lb. each, extracted, color: white, light, light amber, amber, will be classed "LIGHT"

H5- 2 jars of honey 1 lb. each, extracted, color: darker than amber, will be classed "DARK"

- Entries in class H1 and H5, marked, must be in Gambrel Jars (Queenline Glass Jars), may have metal or plastic lids. Canadian and International exhibitors may enter class H1 and/or H5 with 500 gram universal jars.
- An official honey color grade sheet may be used to determine class.
- All entries must be produced from an entrant's apiary and have been produced after January 31, 2021.

Judging Criteria

Extracted Honey

Class H1 and H5

Maximum Points

- | | |
|--|----|
| • Density: max water content 18.5% | 20 |
| • Water content 15.5%-17.0% | 20 |
| • Water content 17.1% - 18.0% | 18 |
| <i>(Disqualification: above 18.6% water or below 15.5 %)</i> | |
| • Absence of crystals | 10 |
| • Cleanliness <i>(without the following: lint, dirt, wax, foam; award 6 points each)</i> | 24 |
| • Flavor <i>(Points reduced only for flavor lost by processing)</i> | 8 |
| • Color | 8 |
| • Container appearance includes equal level of fill | 10 |
| • Accuracy/Uniformity of filling <i>(Headroom: 1/2 inch maximum, 1/8 inch minimum; no gap between honey level and cap)</i> | 20 |

Total

100

Contact Persons: Mickey Cunningham, tel.- 276-579-2123/email: cunningmr@hughes.net or

Michelle Pridgen, cell-276-768-0597/independencefarmersmarket.org

Fair Grounds: Bottomley's Christmas Tree Business Warehouse, Route 21, Elk Creek, VA 24326

Gambrel jars may be available from Mickey Cunningham.

Judging Criteria

Extracted Honey Entry Number: _____

Class H1 and H5**Maximum Points Score**

• Density: max water content 18.5%	20	_____
• Water content 15.5%-17.0%	20	_____
• Water content 17.1%-18.0%	18	_____
• <i>(Disqualification: above 18.6% water or below 15.5%)</i>		
• Absence of crystals	10	_____
• Cleanliness <i>(without the following: lint, dirt, wax, foam; award 6 points each)</i>	24	_____
• Flavor <i>(Points reduced only for flavor lost by processing)</i>	8	_____
• Color	8	_____
• Container appearance	10	_____
• Accuracy/Uniformity of filling <i>(Headroom: ½ inch maximum, 1/8 inch minimum; no gap between honey level and cap)</i>	20	_____

Total	100	_____
--------------	------------	--------------